



Sox-8/9/17/18 Polyclonal Antibody

Catalog No	YP-Ab-02031
Isotype	IgG
Reactivity	Human;Mouse;Monkey
Applications	WB;IHC;IF;ELISA
Gene Name	SOX8/9/17/18
Protein Name	Transcription factor SOX-8/9/17/18
Immunogen	The antiserum was produced against synthesized peptide derived from human SOX8/9/17/18. AA range:116-165
Specificity	Sox-8/9/17/18 Polyclonal Antibody detects endogenous levels of Sox-8/9/17/18 protein.
Formulation	Liquid in PBS containing 50% glycerol, 0.5% BSA and 0.02% sodium azide.
Source	Polyclonal, Rabbit,IgG
Purification	The antibody was affinity-purified from rabbit antiserum by affinity-chromatography using epitope-specific immunogen.
Dilution	WB: 1/500 - 1/2000. IHC: 1/100 - 1/300. ELISA: 1/10000.. IF 1:50-200
Concentration	1 mg/ml
Purity	≥90%
Storage Stability	-20°C/1 year
Synonyms	SOX8; Transcription factor SOX-8; SOX9; Transcription factor SOX-9; SOX17; Transcription factor SOX-17; SOX18; Transcription factor SOX-18
Observed Band	47kD
Cell Pathway	Nucleus .
Tissue Specificity	Brain,Spleen,
Function	function:May play a role in central nervous system, limb and facial development. May be involved in male sex determination. Binds the consensus motif 5'-[AT][AT]CAA[AT]G-3'.,similarity:Contains 1 HMG box DNA-binding domain.,
Background	SRY-box 8(SOX8) Homo sapiens This gene encodes a member of the SOX (SRY-related HMG-box) family of transcription factors involved in the regulation of embryonic development and in the determination of the cell fate. The encoded protein may act as a transcriptional activator after forming a protein complex with other proteins. This protein may be involved in brain development and function. Haploinsufficiency for this protein may contribute to the mental retardation found in haemoglobin H-related mental retardation (ART-16 syndrome). [provided by RefSeq, Jul 2008],



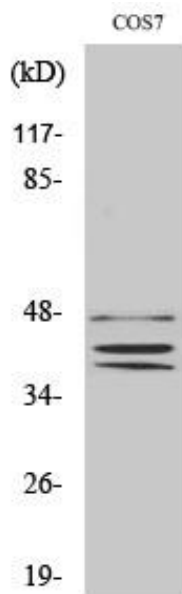
matters needing attention

Avoid repeated freezing and thawing!

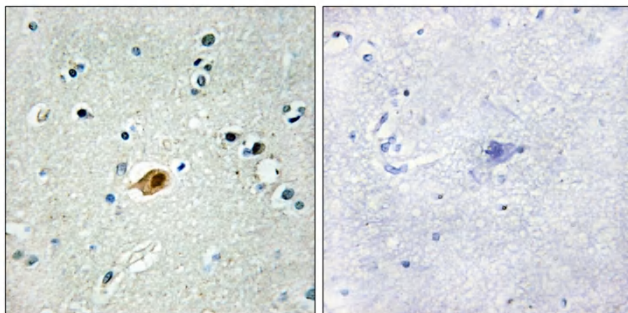
Usage suggestions

This product can be used in immunological reaction related experiments. For more information, please consult technical personnel.

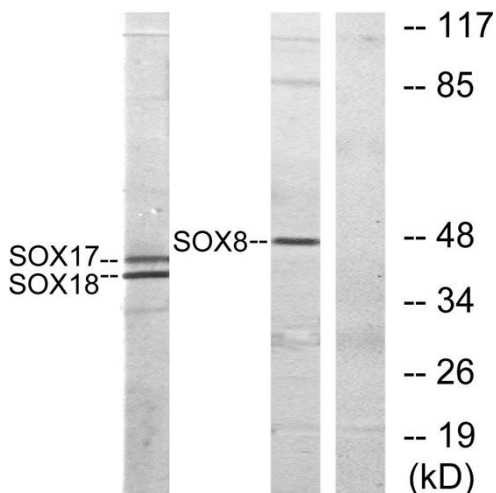
Products Images



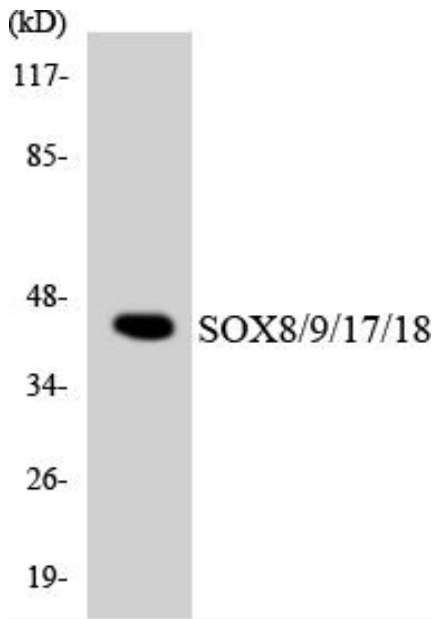
Western Blot analysis of various cells using Sox-8/9/17/18 Polyclonal Antibody cells nucleus extracted by Minute TM Cytoplasmic and Nuclear Fractionation kit (SC-003, Inventbiotech, MN, USA).



Immunohistochemistry analysis of paraffin-embedded human brain tissue, using SOX8/9/17/18 Antibody. The picture on the right is blocked with the synthesized peptide.



Western blot analysis of lysates from COS7 cells, treated with serum 10% 30', using SOX8/9/17/18 Antibody. The lane on the right is blocked with the synthesized peptide.



Western blot analysis of the lysates from HeLa cells using SOX8/9/17/18 antibody.